

MOOR INSTRUMENTS LIMITED

Moorsoft for Windows for moorLAB V1.1

USER MANUAL (Issue 1)

A data handling program for use with the moorLAB

25th January 2000

Moor Instruments Limited
Millwey Rise
AXMINSTER
Devon
EX13 5HU
England
Tel. +44 (0)1297 35715
Fax +44 (0)1297 35716
Website: www.moor.co.uk
Email: marketing@moor.co.uk

1	USING THE MOORLAB USER MANUAL	3
2	NEW FEATURES COMPARED WITH V1.0	4
3	INTRODUCTION.....	5
3.1	LASER DOPPLER BLOOD FLOW MEASUREMENT.....	5
3.2	OVERVIEW OF MOORLAB	7
3.3	THE COMPUTER AND SOFTWARE INSTALLATION	7
3.3.1	<i>Computer Specifications.....</i>	<i>7</i>
3.3.2	<i>Software Installation</i>	<i>7</i>
3.3.3	<i>Registration Number</i>	<i>8</i>
4	STEP BY STEP GUIDE	9
4.1	MONITORING WINDOW	9
4.1.1	<i>Open a Monitor Window.....</i>	<i>9</i>
4.1.2	<i>Setup Monitor Configuration</i>	<i>10</i>
4.1.3	<i>Setup Display Configuration.....</i>	<i>11</i>
4.1.4	<i>Configuration file</i>	<i>12</i>
4.1.5	<i>Start a Measurement</i>	<i>12</i>
4.1.6	<i>Icon Functions.....</i>	<i>12</i>
4.2	REVIEW WINDOW	17
4.2.1	<i>Open a Review Window.....</i>	<i>17</i>
4.2.2	<i>Icon Functions.....</i>	<i>18</i>

Moor Instruments Limited assumes no responsibility for the operator's failure to comply with instructions given in this manual.

1 USING THE moorLAB USER MANUAL

This manual is for use with Moor Instruments' Moorsoft for Windows for moorLAB/floLAB software, run on an IBM 486 PC, Pentium or compatible, in conjunction with the moorLAB/floLAB blood flow monitor.

Users unfamiliar with laser blood flow monitoring and analysis should read the Introduction of this manual. Otherwise users need only read the section 'Step by Step Guide'.

2 NEW FEATURES COMPARED WITH V1.0

This version:-

- a. Does not require a dongle key to operate (see Section 3.3.3 Registration Number).
- b. Can display graphically either conc or dc values and stored values of either conc or dc (Version 1.0 did **not** allow display and reading of dc).

3 INTRODUCTION

3.1 Laser Doppler Blood Flow Measurement

Laser Doppler flowmetry provides easy to use, non-invasive, real time measurements of local tissue blood flow. Laser Doppler blood flow measurement uses the Doppler frequency broadening of laser light, when the light is reflected off a moving object. The degree of broadening is dependent on the speed of the moving object, the wavelength of the laser light and the angle of the scatter. For example laser light, wavelength 780nm, back scattered off a particle moving in a watery medium with a speed of 1mm/sec has a frequency shift of approximately 3.3KHz. Laser light is used to illuminate the skin tissue resulting in some of the light being reflected straight back by the static tissue, and some being reflected by moving blood. The reflected light from the static tissue and the frequency broadened light from moving blood is collected and mixed on a photodetector. The photocurrent can then be processed to produce indications of the flux, concentration and speed of the moving blood.

The moorLAB/floLAB uses solid state laser diodes as the laser light sources at about 780nm. Two glass fibres are used, mounted in a probe head, one to transmit the laser light to illuminate the tissue, and the other fibre to collect the reflected light. This is then photodetected. The signal from the photodetector is amplified and processed by an analogue processor. The signal is then sampled and further processed by a digital processor. The digital processor also performs all the user interface and display functions.

The mean blood cell flux (flux), number concentration of moving blood cells (conc), mean speed of the blood (speed) of each moorLAB/floLAB channel are output to a PC in real time via an RS232 serial link.

If moorLAB/floLAB is running on a PC, this information may be collected, displayed, stored, analysed and converted into moorLAB format or text format.

The algorithms used to compute flux conc and speed are as follows:-

$$flux = \frac{k1 \int_{\omega_1}^{\omega_2} \omega P(\omega) d\omega - (\text{dark} + \text{short noise})}{dc^2}$$

$$conc = \frac{k2 \int_{\omega_1}^{\omega_2} P(\omega) d\omega - (\text{dark} + \text{short noise})}{dc^2}$$

$$speed = k3 \times flux / conc$$

ω is the frequency of Doppler shift

($\omega = 2\pi f$, f: frequency in Hz)

$P(\omega)$ is the power of signal at frequency ω

dc is the intensity of all detected light

ω_1 is the low cut off frequency

$$(\omega_1 = 2\pi f_1, f_1: \text{frequency in Hz})$$

ω_2 is the high cut off frequency

$$(\omega_2 = 2\pi f_2, f_2: \text{frequency in Hz})$$

k_1 , k_2 and k_3 are scaling constants

The optical units are arbitrary. The values assigned are determined by standardising the moorLAB/floLAB parameter of flux (blood flow) etc, using a physical standard, e.g. the thermal (Brownian) motion of polystyrene microspheres (sub-micron diameter sphere) in water.

The laser Doppler monitor user guide should be consulted for information on calibration.

3.2 Overview of moorLAB

The moorLAB program receives the moorLAB/floLAB real time flux and conc data via the RS232 serial link and converts the information into a graphical format. The data will be displayed in real time and stored.

The moorLAB software consists of two different windows, they are:

Monitoring window: receive and display real time parameter signals from moorLAB/floLAB.

Review window: load and analyse saved parameter data from a moorLAB format file.

3.3 The Computer and Software Installation

3.3.1 Computer Specifications

Only computers complying with IEC 950 should be used.

The minimum requirements for running the moorLAB software is:-

Processor - 486 dx PC (Pentium is recommended).

Memory - 4Mb RAM, 50Mb space on hard disk drive (depending on monitoring duration), minimum recommended.

Operating system - Windows™ 3.11 or higher, e.g. Windows™ 95.

3.3.2 Software Installation

A working knowledge of Windows™ is assumed for installation and operation of moorLAB software.

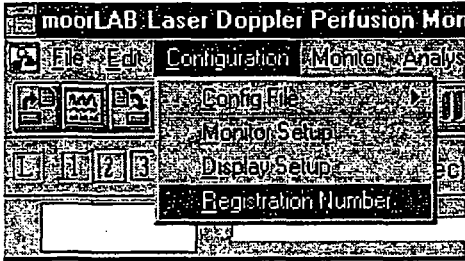
To install, place the disk in the drive A. From Program Manager select File, then Run.
Type:

A:INSTALL

Then follow the instructions.

3.3.3 Registration Number

A registration number has been assigned to the copy of moorLAB that has been supplied to you. This number is automatically recorded at installation and can be displayed during RUN. Click File → New → Configuration



Do not change this number. If it is accidentally changed you will need to re-enter it. Contact Moor Instruments if help is needed.

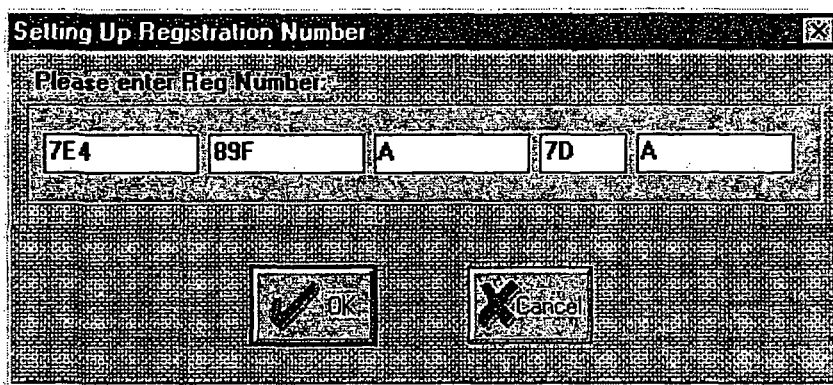
Note if you are using a demonstration version this is fully operational but is a time limited version – usually 3 months.

A message will be displayed on expiry:-

Cannot Monitor

Program has passed its expiry date use Configuration/Registration Number to enter new registration number.


Contact Moor Instruments if you wish to purchase the software. Moor Instruments will supply a registration number on receipt of your order.

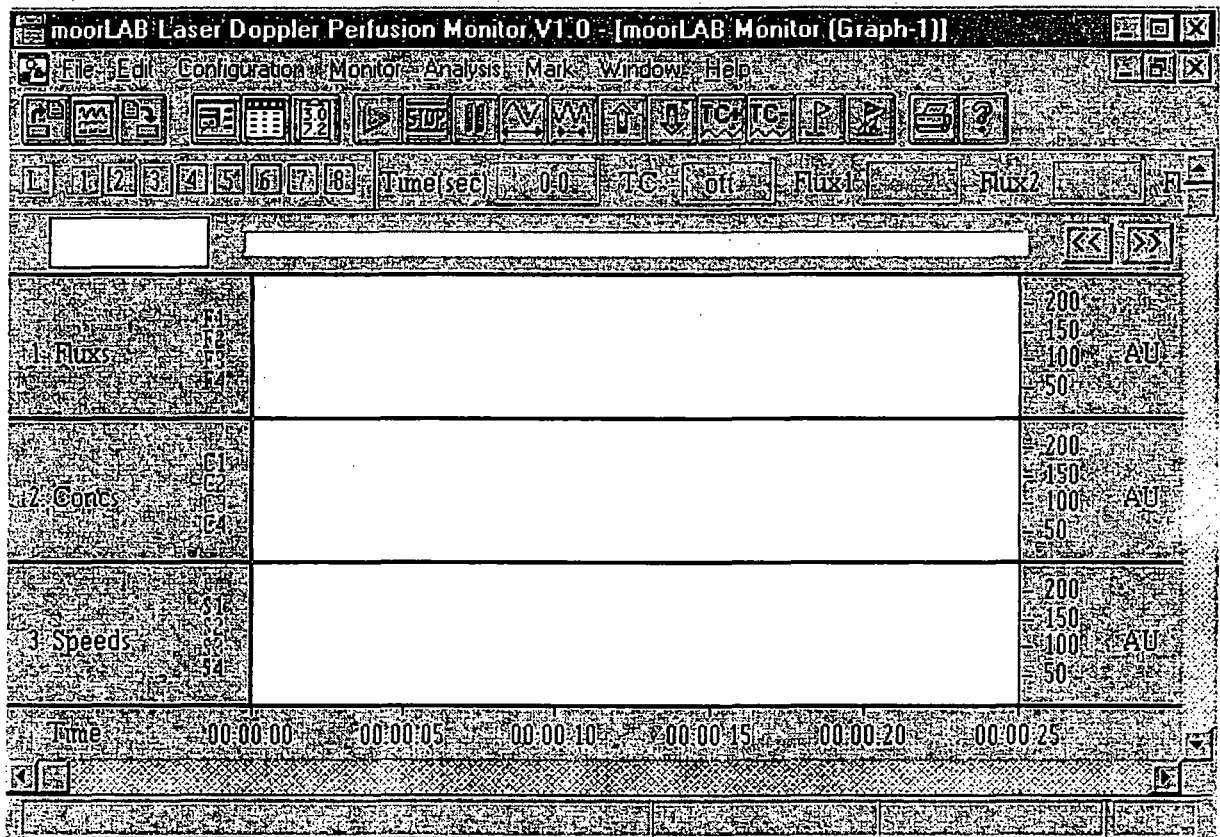


4 STEP BY STEP GUIDE


4.1 Monitoring Window

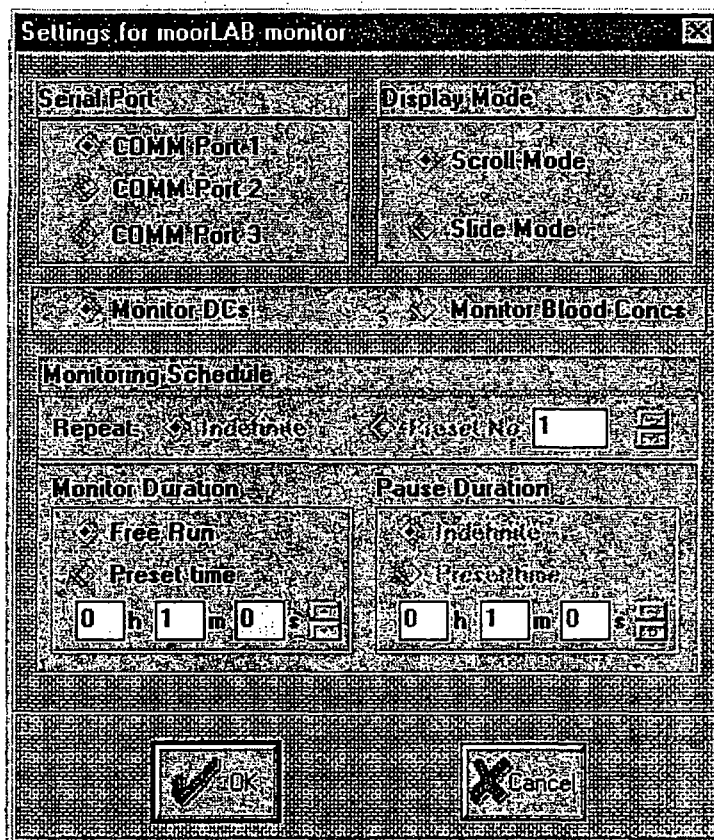
4.1.1 Open a Monitor Window

To open a Monitoring window select **File** → **New** or click the icon .
A monitoring window (illustrated below) will be shown:



4.1.2 Setup Monitor Configuration


To setup monitor configuration select Configuration → Monitor Setup or click the icon . The following window will appear:

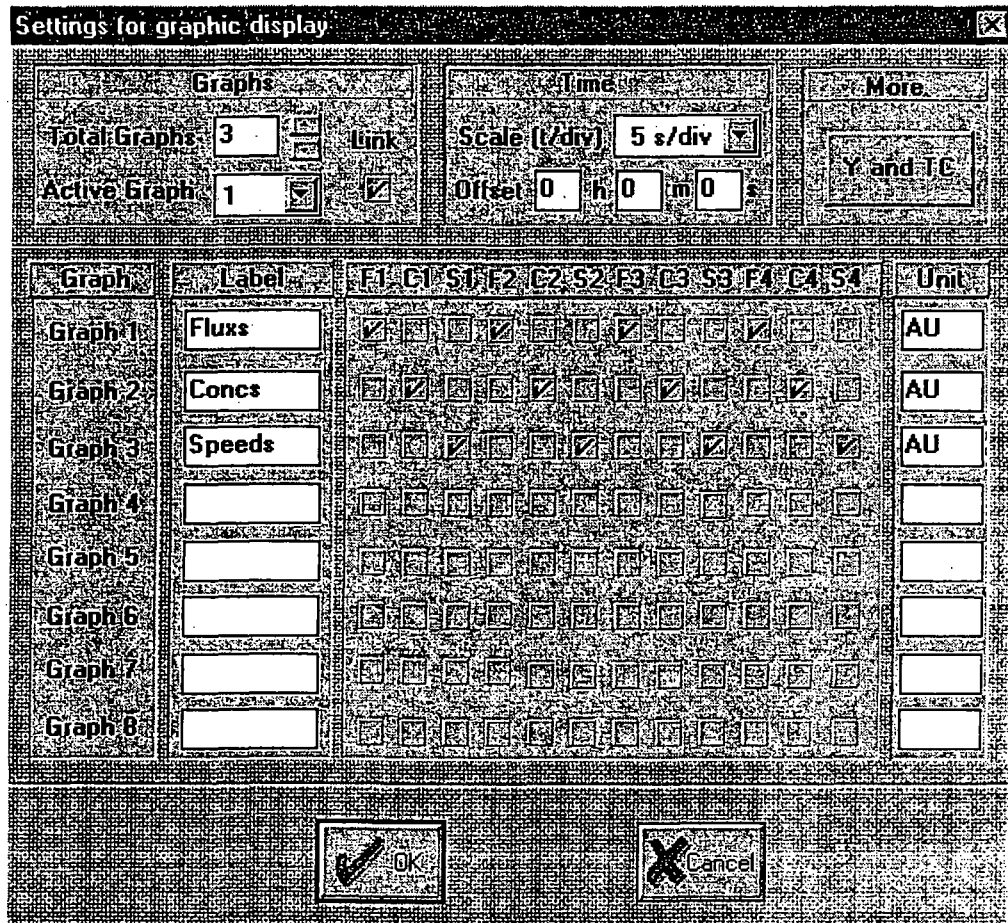


In the above window the serial port, scroll/slide display mode, monitoring schedule and the display of dc or conc can be selected. Note that for some computers a delay in the graphic display can be observed in scroll mode. If this occurs slide mode should be used.

Note that in this version of moorLAB software only the free run and preset time modes are implemented, others are greyed out.

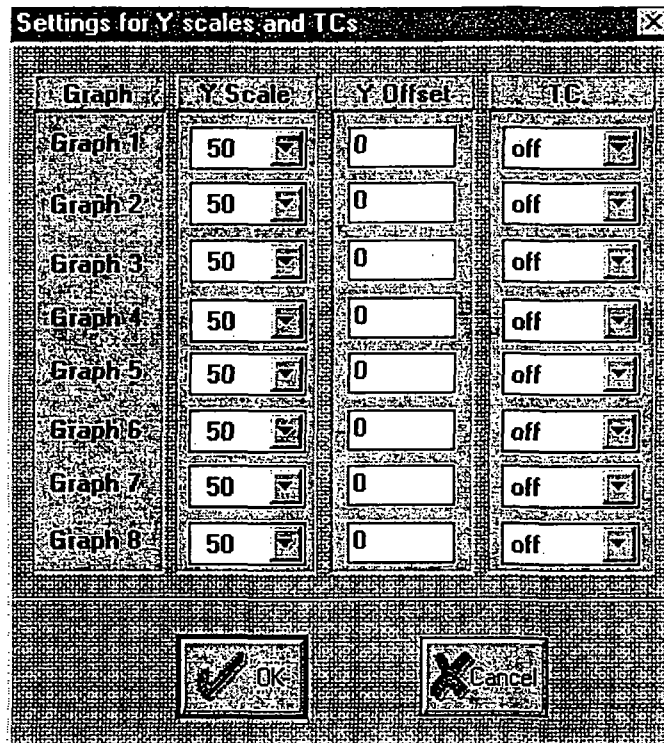
4.1.3 Setup Display Configuration

Once a monitoring window is open the display configuration can be defined by selecting Configuration → Display Setup or clicking the icon . The following window will be available,



in which the graph link status, active graph, graph labels, graph units, time scale and time offset can be changed. The parameter traces which will be displayed in each graph can be defined by ticking the corresponding check box (button). Upto 4 parameters can be assigned to each graph. If more than 4 parameters are chosen the first 4 will be used.

The time constants, Y offsets and Y scales can be configured by clicking the **Y and TC** button in the above window. The following dialogue box will be shown to allow user to change the settings:



4.1.4 Configuration file

The configurations described in sections 3.1.2 and 3.1.3 can be saved into a file (Configuration → Config File → Save) so that user can use the same configuration next time by loading the config file (Configuration → Config File → Load).



4.1.5 Start a Measurement

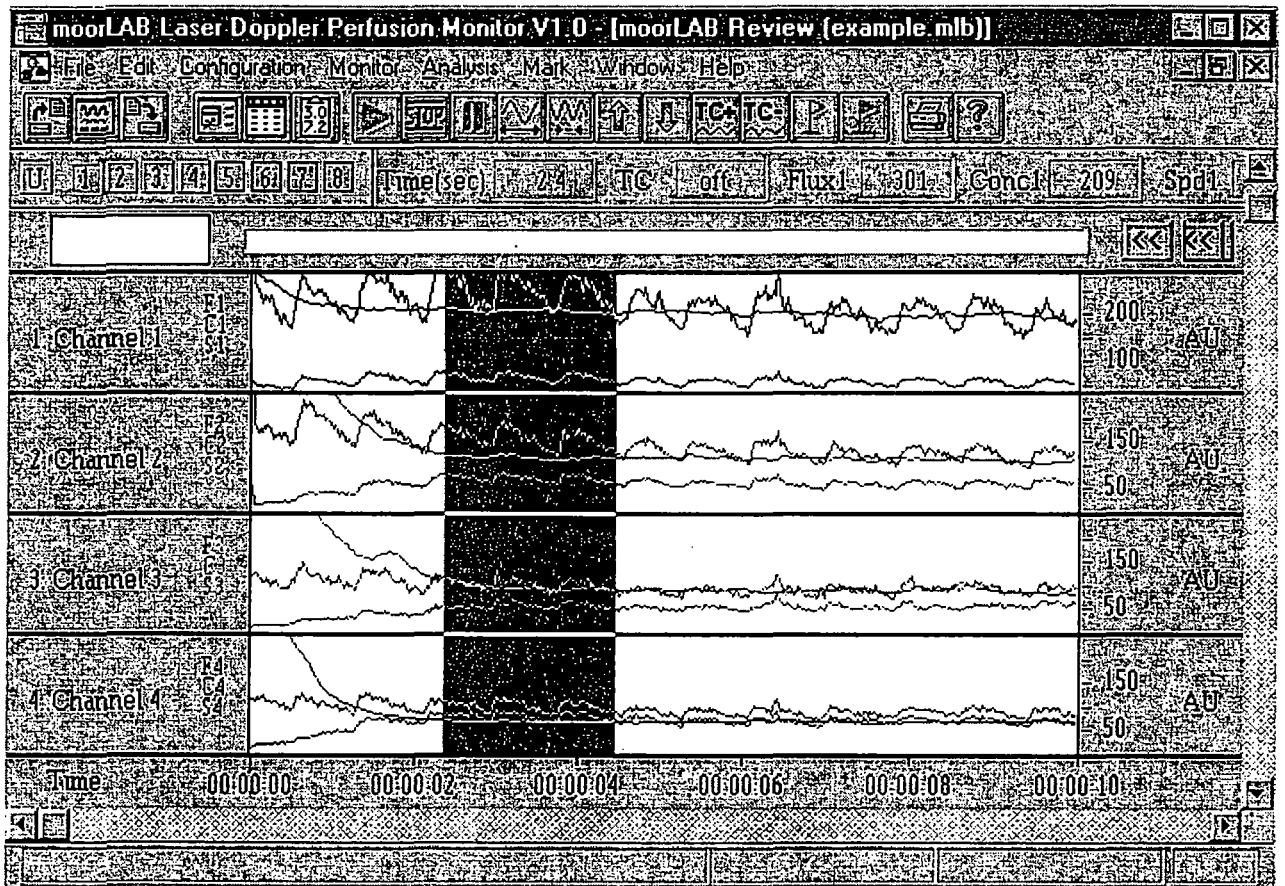
Once a monitoring window is open and the moorLAB is in the RUN mode a measurement can be started by selecting Monitor → Start or clicking the icon . A measurement can be Paused/Continued by toggling the icon . At the end of a measurement selecting Monitor → Abort or clicking the icon will stop the measurement. The recorded data can be saved by selecting File → SaveAs or clicking the icon . There are two file formats available: moorLAB format and text format.

4.1.6 Icon Functions

The operations of individual elements of the icon tool bar are described below:

1. setup monitor configuration.

2.  setup display configuration.
3.  calculate statistics within a selected region. To define a statistics region press down the left mouse button at the beginning of the region followed by dragging the mouse with the left button still pressed to reach the end of the region and releasing the mouse button. The selected region will be shown in the inverted colours as illustrated below:



Once the region has been defined clicking the statistics icon will bring up an option dialogue box so that user can choose between calculating the statistics for all selected parameters (raw data only) and calculating statistics for parameters in the active graph only (time constant considered). If the first option is chosen the statistics will be shown as follows:

example.mlb (Statistics-1)					
File					
Statistics (example.mlb)					
	Mean	Std	Min	Max	Median
F1	245.0	30.1	184	292	249
C1	203.0	3.6	194	210	203
S1	59.8	7.0	47	71	61
F2	152.1	18.7	115	192	155
C2	112.5	3.8	105	120	112
S2	66.9	7.0	53	80	69
F3	97.5	10.2	77	127	99
C3	92.7	6.6	85	115	91
S3	52.2	5.7	43	69	51
F4	96.5	10.1	77	117	98
C4	63.5	1.5	61	67	63
S4	75.1	7.2	62	90	76








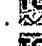
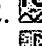

Total Point = 86
 Start point: 2.4 sec. End point: 4.5 sec.
 TC = OFF

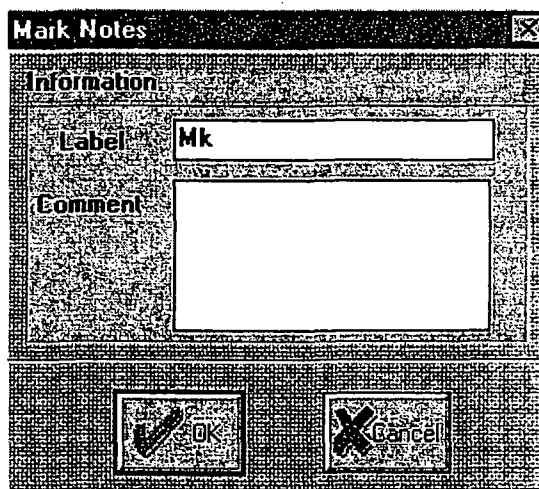
If the second option is selected the following table will be given as graph 1 is the selected active graph:




example.mlb (Statistics-2)					
File					
Statistics (example.mlb)					
	Mean	Std	Min	Max	Median
F1	245.0	30.1	184	292	249
C1	203.0	3.6	194	210	203
S1	59.8	7.0	47	71	61

Total Point = 86
 Start point: 2.4 sec. End point: 4.5 sec.
 Active Graph Number = 1 , TC = off

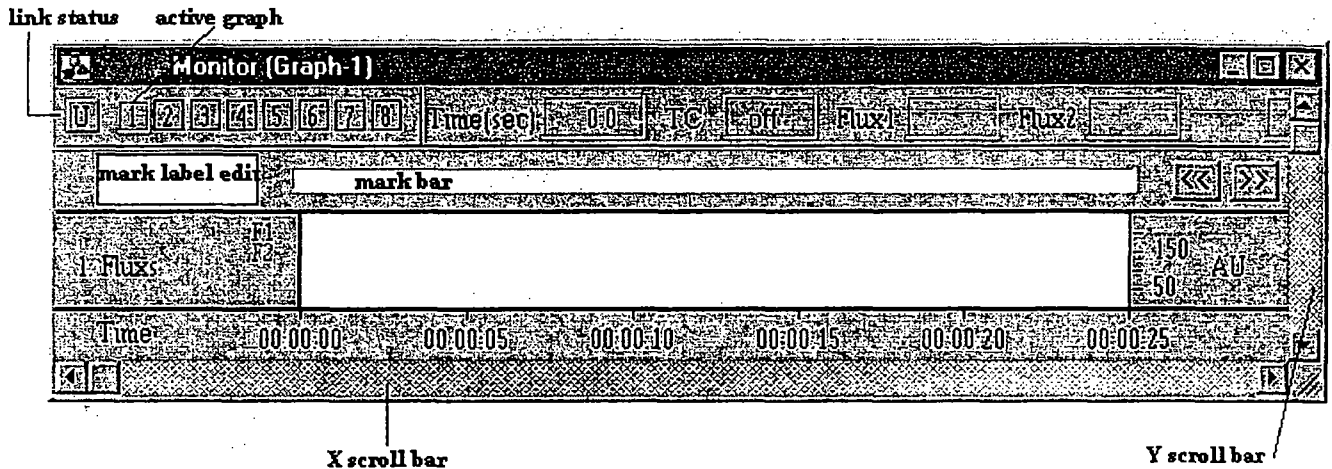
In both situations a File menu will be available to allow user to save or print the results.

4.  start a measurement.
5.  stop a measurement.
6.  toggle pause/continue a measurement.
7.  expand time scale.
8.  compress time scale.
9.  expand Y scale.
10.  compress Y scale.
11.  increase time constant (smooth) *
12.  decrease time constant.
13.  insert a mark. In a real time monitoring mode, when the mark icon is clicked a mark will be added in real time. The added mark will be defined as the active mark which is displayed by a black rectangle in the **mark bar**. The mark label can be entered in the **mark label Edit** (refer to the diagram on next page). If real time monitoring is aborted or paused clicking the insert mark icon will add a mark in the cursor position and open an edit mark notes dialogue box so that user can enter mark label and comment as illustrated below:



14.  delete the current active mark.
15.  print the parameter traces displayed in the current window after a measurement.
16.  open the help menu. The commands help gives explanations for all menu items. The Toolbar help explains all icon functions.


17. Link status: clicking the link status rectangle will toggle between link/un-link of the graphs. If 'L' is displayed in the rectangle all graphs are linked, i.e. changing Y scale, Y offset and time constant will affect all graphs. If 'U' is displayed in the rectangle all graphs are not linked, i.e. changing Y scale, Y offset and time constant will only affect the active graph.

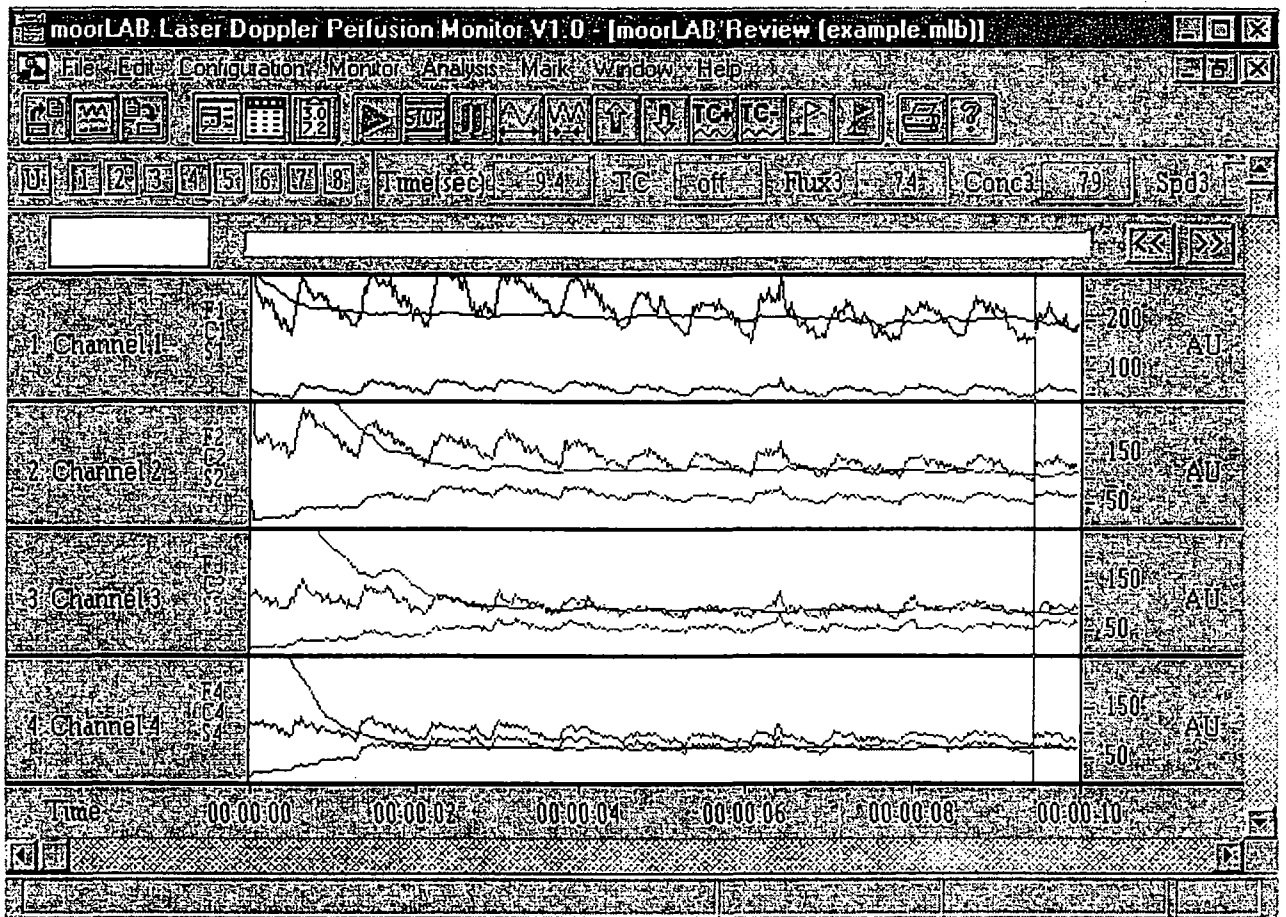


18. Active graph: clicking on the numbered rectangle or on the graph rectangle will make that graph as the active graph.
19. << make the previous mark (left to the current active mark) as the active mark.
20. >> make the next mark (right to the current active mark) as the active mark.
21. X scroll bar: it can be used to change time offset. (Any X scroll bar action will affect all graphs).
22. Y scroll bar: it can be used to change Y offset. If all graphs are linked any Y scroll bar action will affect all graphs, otherwise it will only affect the active graph.

4.2 Review Window




4.2.1 Open a Review Window

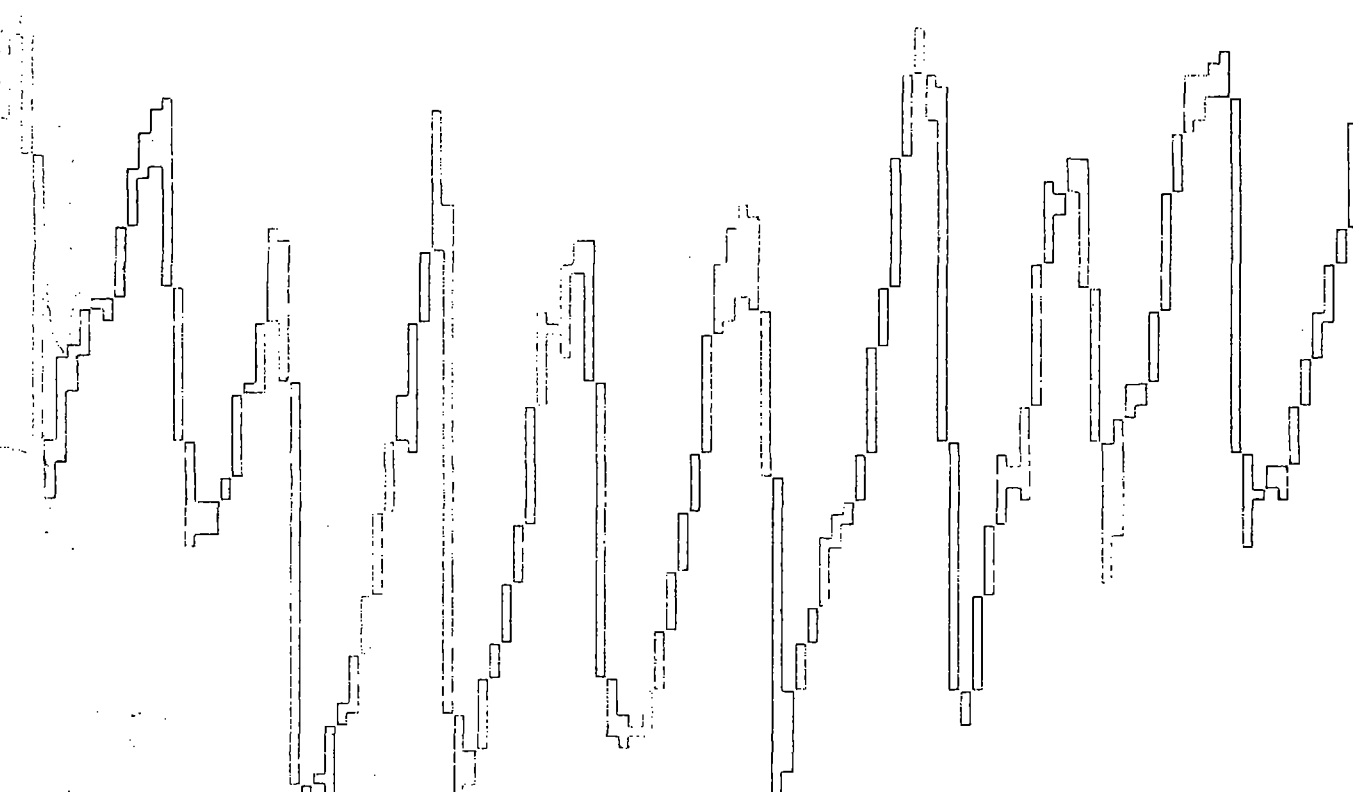
Data stored in the moorLAB format can be loaded into a review window. To open a review window select **File** → **Open** or click the icon . If the file is successfully opened the parameter traces will be displayed in the same configuration as when they were saved. An example is illustrated below:



Please refer to section 3.1.3 and section 3.1.4 for configuration setup.

4.2.2 Icon Functions

The icon functions in a review window are the same as in a monitor window (refer to section 3.1.6), except that the icons ,  and  are not available in a review window.



Moor Instruments Ltd. Millwey, Axminster, Devon EX13 5HU, England
Telephone: +44 (0) 1297 35715 Fax: +44 (0) 1297 35716
E-mail: mail@moor.co.uk Internet: <http://www.moor.co.uk>

Moor Instruments Inc. 501 Silverside Road, Suite # 66, Wilmington, DE 19809, USA
Telephone: (302) 798-7470 Fax: (302) 798-7299
E-mail: moorinc@interserv.com
